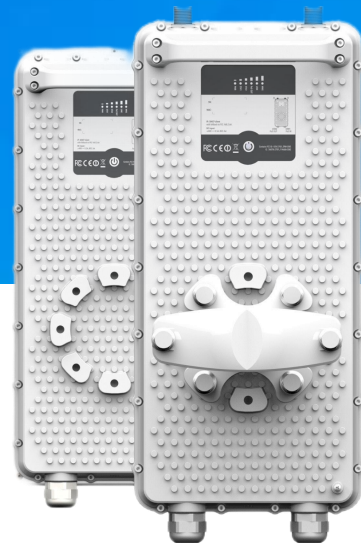


PTP 5-23/5-N

5GHz Outdoor PTP Bridge



Outstanding Capacity

Extremely high 750 Mbps capacity and carrier grade performance is ensured by a professional and powerful RF design supporting up to 256QAM modulation and 31 dBi (combined) radio output power with a total system gain of 172 dB. Proprietary protocol for data transmission (W-Jet V) specifically engineered for the PTP scenario delivers high performance even on a long distance links with high interference and stabilizes the latency to 2-4 ms range.

Professional Design

Rock solid and easy to use mounting bracket ensures high wind-load survival and rapid deployment of the link. 45° integrated antenna tilt option increases flexibility when deploying links in a noisy areas. GORE-TEX gland allows pass-through of water vapor in humid conditions. Detachable handle makes it easy to carry the devices and works as additional tightening option of the device. Newly designed RGB LEDs indicate different devices statuses and signal level when aligning the antenna in 1 dBm step.

Powerful All-in-One Hardware Platform

New 1.2 GHz CPU dedicated for data processing delivers extremely high 250k PPS rate and swift performance of the PTP link. 2 x gigabit Ethernet ports with PoE pass-through allow building 1+1 (failover) or repeater links and also make PTP 5G Series ideal for video surveillance scenarios. The ports are made according to 802.3at standard compliant. An integrated surge and ESD protection is designed according to IEC standards and passes class 4 requirements.

Wireless Configuration Interface

Additional 2.4 GHz radio allows accessing your device wireless connecting with any type of device. This is extremely helpful when installing and setting up PTP links and then troubleshooting them in a difficult to reach conditions. Tests shown the radio is accessible even standing 20 meters away from a 10-story building when device is mounted on the top of the building

Powerful OS

PTP 5-23/5-N operating system ensures easy and rapid deployment of your point-to-point links and rock-solid performance once the links are deployed. Fresh responsive design user interface adjusts layout based on the size of your screen. Link setup wizard guides through the most important steps when setting up the link. PTP 5G links support single side configuration when parameters set on the master side are automatically applied on the slave unit simultaneously. This simplifies and shortens link configuration. Essential tools including link test, antenna alignment, spectrum analyzer, site survey and etc. are implemented to make the setup and trouble-shooting of the links efficient and straightforward. Automatic mechanisms like auto-channel and automatic transmit power control optimize the link for maximum performance even in the areas with high interference.

Specifications

Radio	
Wireless Protocol	W-Jet V
Radio Mode	MIMO 2×2
Frequency Range	5.1–5.9GHz
Channel Size	5, 10, 14, 15, 20, 30, 40, 60, 80MHz
Modulation Schemes	OFDM (256-QAM, 64-QAM, 16-QAM, QPSK, BPSK)
Data Rates @ 80MHz	866, 780, 650, 585, 520, 390, 260, 195, 130, 65Mbps
Duplexing Scheme	TDD
Error Correction	BCC, LDPC
Automatic TPC	Supported

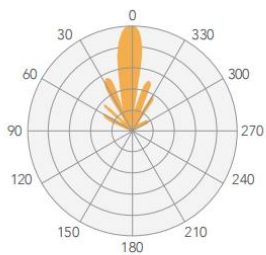
Modulation, Mbps	866	780	650	585	520	390	260	195	130	65
Tx Power, dBm	25	26	26	27	27	28	29	30	30	31
Receive Sensitivity, dBm	-71	-73	-77	-79	-80	-84	-87	-92	-94	-97

Antenna	
PTP 5-23	Integrated Directional Dual-Pol 23dBi Panel
PTP 5-N	2 N-type Connectors
Wired	
First Interface	10/100/1000 Base-T with PoE IN (RJ45)
Second Interface	10/100/1000 Base-T with PoE OUT (RJ45)
Physical	
Dimensions without mount:	
PTP 5-23	Length 379mm (14.9"), Width 387mm (15.2"), Height 51mm (2")
PTP 5-N	Length 399mm (15.7"), Width 174mm (6.8"), Height 47mm (1.8")
Mount Length Till Pole	124mm (4.8")
Weight including mount:	
PTP 5-23	3.9kg (8.5lb)
PTP 5-N	2.9kg (6.3lb)
Power	
Power Input Method	PoE 802.3at, Isolated 42-57VDC
Max Power Consumption	8.6W
Power Output Method	PoE 802.3af, 48VDC, 12.95W Maximum
Packing	PoE Inserter and AC/DC Adapter are Included
Environmental	
Operating Temperature	-40°C (-40°F) ~ +65°C (+149°F)
Humidity	0~90% (Non-Condensing)
Software features	
<ul style="list-style-type: none"> • Wizard for fast link setup • Centralized control from master: <ul style="list-style-type: none"> A) Common wireless link parameters; B) Individual slave parameters • Smart Auto-channel • Robust data security • QoS with hardware acceleration • Spectrum analyzer • Wireless signal and device state indication on RGB LEDs • Dual firmware image 	
Management	
Dedicated 2.4GHz Radio for Management	
System Monitoring	SNMP, GUI/HTTP(S), Shell/SSH and WNMS

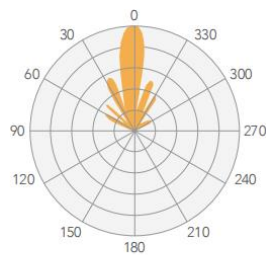
Antenna Specification

V Pol

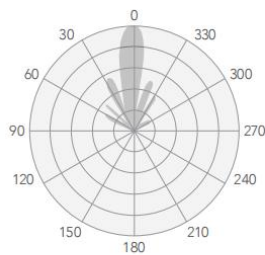
H Pol



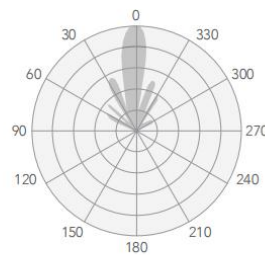
Azimuth



Elevation



Azimuth

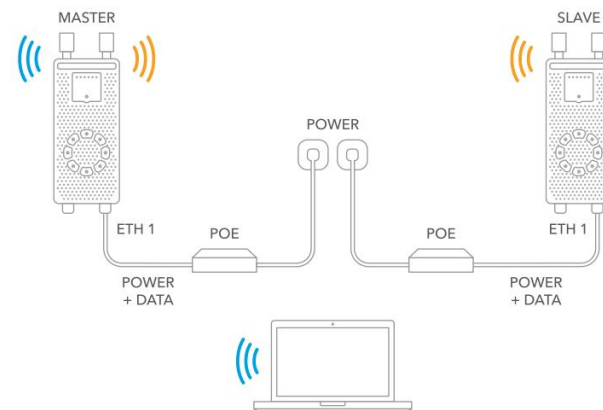
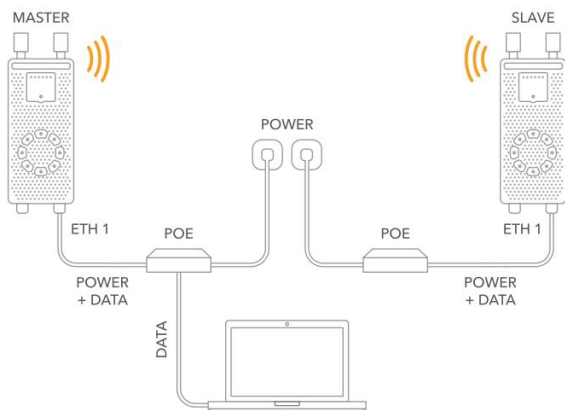


Elevation

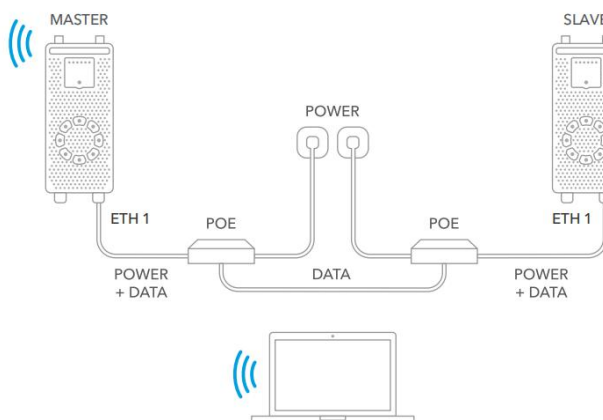
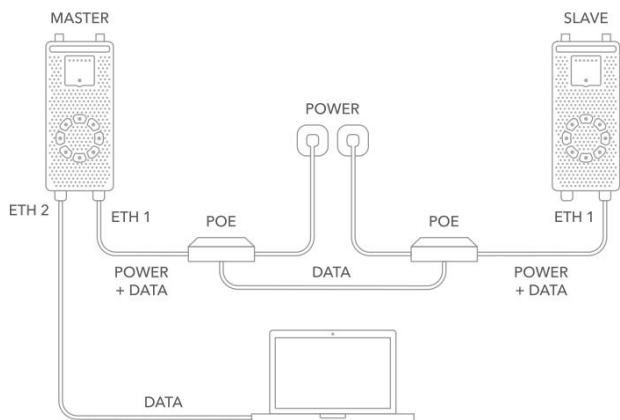
Antenna	
Frequency range	5.1-5.9GHz
Gain	23 dBi
Polarization	Dual linear
Cross-pol Isolation	27dBi
VSWR	1.5:1
Azimuth beamwidth (H pol)	8°
Azimuth beamwidth (V pol)	8°
Elevation beamwidth	8°

Typical Application

Wireless



Wired



802.3af/at Inserter



Electrical specifications			
DC input voltage range	44.0-57.0V	Physical specifications	
IEEE 802.3af/at compliant	POE output	DC input	
Output power	up to 28W	Data input +power jack	RJ45
Power output	RJ45 pins 1,2,4,5 (+) and 3,6,7,8 (-)	Dimensions	117×87×34mm
Data rate	10/100/1000Mbps	Weight	270g
Surge protection	2kV line to line,	Operating temperature	-40 to +65C
	6kV line to ground (output port)	UTP/FTP cable length	100m total (from switch to the device)

ALTI-LINK

ALTI-LINK COMMUNICATION CO., LIMITED

Room 310, Building 4, Dongjiu Innovation Technology Park,
No#76 Bulan Road, 518057, Shenzhen, P.R.China

Tel: +86 755 26937291

Website: www.alti-link.com

Email: inquiry@alti-link.com

Copyright ©2014~2024 Alti-link All Rights Reserved.Specifications are subject to change without notice.