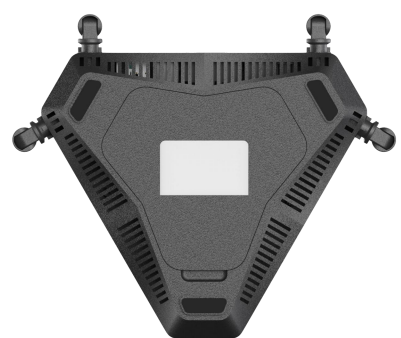
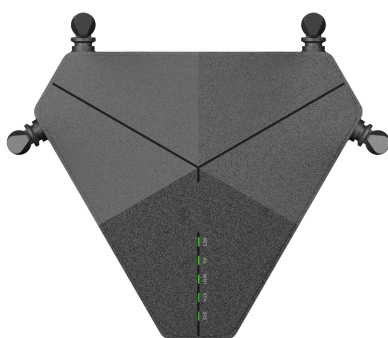


C422

300Mbps CAT4 4G Router

Overview

The Cat4 Indoor CPE C422 is a wireless router, which support 2.4G Wi-Fi, providing high-speeding and stable LTE Cat4 network for users at home or in office. The product adopts ASR1803 cellular solution, which confirms to 3GPP Release10 standard.



Features

- Data service
- SMS
- Security service
- Local and OTA maintenance management function

Specification

Hardware Performance	
Chipset	ASR1803L@Cortex-A7, 22nm LTE/WCDMA HSPA+/EDGE RTL8192ES
LTE	3GPP Release 10 CAT4
Band Support	LTE: B1/3/5/7/8/20/38/40/41 HSPA+/HSPA/WCDMA: B1/5/8 EDGE/GPRS/GSM:B3/5/8
Interface	3x FE RJ45, 1x FXS, 1x Nano(4FF) Sim Slot 1x Type C port for debug.
LED	1x Power,1x Internet,1x 4G,1x Wi-Fi,1x LAN
Button	1x Power, 1x WPS/Reset
Antenna	2x LTE/UMTS/GSM external antennas 2x WLAN 2.4G external antennas

Maximum TX power	LTE	Conform to 3GPP Power Class 3
-------------------------	-----	-------------------------------

	WLAN	2.4G	802.11b: 17dBm
			802.11g: 15dBm
			802.11n: 14dBm
RX sensitivity	LTE	Conform to 3GPP Definition	
	UMTS	Conform to 3GPP Definition	
	GSM	-104dBm	
	WLAN	802.11b: -81dBm@11M	
		802.11g: -72dBm@54M	
		802.11n: -64dBm@MSC7	
Battery	4000mAh /18650 battery(Optional)		
Power consumption	Max 7W		
USB power supply	Input 5V/2A		
Dimensions	177*155*41mm		
Case material	PC,ABS		
Temperature	Working temperature: 0°C to 40°C Storage temperature: 0°C to 40°C		
Humidity	5%-95% (Non-condensing)		
Gain	LTE/UMTS Primary: 3.5dBi LTE/UMTS Secondary: 3.5dBi WIFI 1: 5dBi WIFI 2: 5dBi		
Polarization	LTE/UMTS/GSM: Linear WIFI: Linear		
Cellular Wireless Network	Network Search	Supports automatic or manual network search, the default is automatic	
	Connection Management	Supports automatic and manual connection to the cellular network	
	Network Mode	Supports various network mode Auto LTE only WCDMA only	
	Profile Management	Auto mode, set the profile information required for Internet access according to the SIM card automatically, avoid cumbersome operations for users Profile name	

		<p>APN name</p> <p>User name</p> <p>User password</p> <p>Authentication type, auto/pap/chap</p> <p>IP type, ipv4/6</p>
	Traffic statistics	<p>Supports traffic statistics, including</p> <p>Download, upload and total traffic and duration since the equipment is powered up</p> <p>Sum of download, upload and total traffic and duration since historical statistics were cleared</p> <p>You can manually clear historical statistics</p>
Wi-Fi	Wi-Fi settings	<p>SSID/Key</p> <p>Channel selection, auto or manual</p> <p>Various security mode and algorithms</p> <p>Disable</p> <p>WEP (wired equivalent protocol)</p> <p>WPA2 personal (Wi-Fi Protected Access 2 Personal), AES or TKIP</p> <p>WPA2/WPA mixed mode (Wi-Fi Protected Access 2 Personal/Wi-Fi Protected Access Personal), AES or TKIP</p> <p>Enable/disable SSID broadcast</p> <p>max number of users up to 32</p> <p>Enable/disable Wi-Fi</p>
	WPS	<p>Wi-Fi Protected Setup (WPS) is a latest standard published by the Wi-Fi Alliance with the aim of simplifying the configuration process to establish a secure wireless home network.</p> <p>The device Supports two WPS methods</p> <p>PBC (Push Button Configuration), in which user simply has to push a actual button or virtual one on web UI</p> <p>PIN (Personal Information Number), in which a PIN is entered into device through Web UI</p>
	MAC Address Authentication	<p>Support the following MAC address authentication method</p> <p>White list</p>

		Black list
Router	<p>The device works as a route, supports</p> <p>Default gateway address: 192.168.8.1</p> <p>Standard protocol such as ARP, ICMP, IPv4, IPv6, etc.</p> <p>NAT, translate a public IP address to a private IP address and vice versa</p>	
	DHCP server	<p>DHCP server dynamically allocate IP address to client devices</p> <p>Enable/disable DHCP server</p> <p>Configures DHCP server address pool</p> <p>Lease time, default as 86400 seconds</p>
	DNS relay	<p>Supports DNS relay for client devices</p> <p>Auto mode, use DNS servers from WAN</p> <p>Manual mode, set primary DNS and secondary DNS manually</p>
Basic Status	<p>Users can view the following basic device information on web UI</p> <p>SIM status, Signal strength, roaming status</p> <p>Operator name</p> <p>Data transmission indication</p> <p>Network access technology</p> <p>Network Status</p> <p>WAN IP</p> <p>DNS</p> <p>Wi-Fi Status</p> <p>The number of devices connected to MiFi and their details, including name, IP, MAC, etc.</p>	
Phone Book	<p>Supports contact group management</p> <p>Add group</p> <p>Delete group(s), batch operation is supported</p> <p>View and modify existing group information</p> <p>Supports search</p>	
	<p>Supports contact management</p> <p>Add contact</p> <p>Delete contact(s), batch operation is supported</p> <p>Move contact(s) to group, batch operation is supported</p> <p>Import contact from SIM card</p> <p>Supports search</p>	

	<p>View contacts list, Supports pagination display</p> <p>Modify existing contact information, including name, number, group, etc.</p> <p>Select one or more contacts and send them a text message</p>	
SMS	<p>Supports SMS (short message service) related functions</p> <p>Inbox, outbox, and draft management</p> <p>View list of messages, Supports pagination display and detail of messages, including number, content, date, etc.</p> <p>Edit, save, delete, and modify SMS</p> <p>Sending short message to one or more contacts</p> <p>Receives short message, new and unread message alerts</p> <p>Replay and forward message</p> <p>Supports various data coding scheme, GSM 7-bit and UCS</p> <p>Supports normal message, up to 160 ASCII characters or 70 UCS2 characters</p> <p>Supports long message (concatenated short messages), up to 612 ASCII characters or 268 UCS2 characters</p> <p>Supports flash message</p>	
Security	<p>The device supports the following security functions.</p> <p>IP Filter</p> <p>Port Filter</p> <p>URL Filter</p> <p>Port forward</p> <p>DMZ</p> <p>UPnP</p> <p>DDNS</p>	
Firmware Update	FOTA	<p>Provide complete FOTA solution</p> <p>Detect new firmware information on FOTA server manually/automatically, including version, size, release date, and release note, etc.</p> <p>Download new firmware from the server and update the device</p> <p>The server initiates a firmware update for the specified device</p>
	Local Update	<p>Users can also upload firmware and update it through the Web UI</p>
SIM Management	<p>Supports PIN of SIM Card, including</p> <p>Enable/disable PIN</p>	

	Change PIN Verify PIN Reset Pin by PUK
Customization Functions	Web UI SIM Lock APN (Profile) Trusted boot USSD Domain name

ALTI-LINK

ALTI-LINK COMMUNICATION CO., LIMITED

Room 310, Building 4, Dongjiu Innovation Technology Park,
No#76 Bulan Road, 518057, Shenzhen, P.R.China
Email: inquiry@alti-link.com

Copyright ©2014~2024 Alti-link All Rights Reserved. Specifications are subject to change without notice.